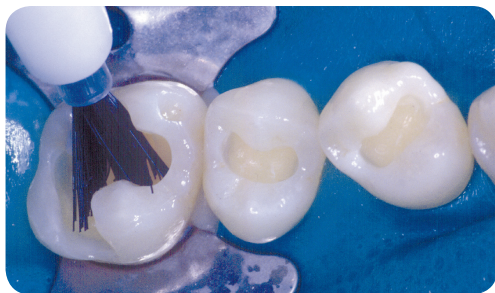




Tenure MPB

Multi-Purpose Bonding System

Tenure Multi-Purpose Bonding System has high bond strength and excellent retention, along with significant reduction of microleakage and post-operative sensitivity, making it the bonding agent of choice for thousands of clinicians.



Before: Tenure simultaneously applied to multi-preps.



After: The finished sensitivity-free restoration.

Dentistry and Photography by Ross Nash, DDS

- Bonds to all surfaces
- Complete self-cure
- Low film thickness
- Versatility
- Easy flow

Applications

- All routine direct and indirect resin composite bonding
- Root/dentin desensitization
- Porcelain bonding or ceramic veneers
- Bonding amalgams
- Bonding indirect gold, porcelain, or ceramic inlays and onlays
- Crown prep desensitization prior to impression/temp
- Bonding porcelain repair
- Bonding to precious and semi-precious prepared metals



Tenure S Bond Enhancer

Tenure S is a single component, light cured, hydrophilic bonding agent that further enhances bonding. When used in combination with Tenure A and B, Tenure S offers even greater bond strengths to intraoral surfaces.

Available through



To Order: 1-800-372-4346 8:00am-8:30pm (et)
www.henryscheindental.com

Features	Benefits
Curing enhancement	Initiates curing from the tooth-restoration interface Allows the composite resin to be bulk filled
Easy flow	Penetrates deeply and interacts with the intertubule dentin to form the hybrid layer and reduce sensitivity
Self-cure	Light-independent — complete cure which seals deep areas where light-cured, high-viscosity bonding agents will not reach
Low film thickness resin/porcelain restorations	Can be used under indirect composite

Applications



Composite bonding – fractured central incisor



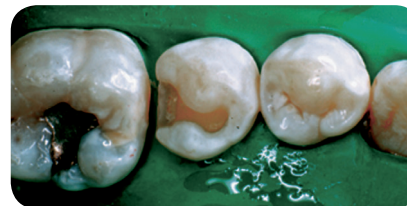
Porcelain or composite veneering – enamel demineralization and caries after orthodontic treatment of maxillary anterior teeth.



Bonding porcelain or ceramic crowns.



Amalgam bonding – cuspal replacement amalgam preparation.



Porcelain composite or gold inlays and onlays



Desensitizing or restoring erosion lesions – mandibular incisors and canines.

Bond Strength to Dentin	
A. J. Gwinnett ¹	28.5 MPa
J. O. Burgess ²	23.5 MPa

1. Gwinnett, A. J., Moist Versus Dry Dentin: Its Effect On Shear Bond Strength, Am J Dent. 5: 127-129, 1992

2. Burgess, J. O., et al. Shear Bond Strength of Thirteen Dentin Bonding Agents. HSC San Antonio, TX Abstract 188, 1995

Product	Item #
Tenure MPB	
Tenure MPB System	031146000
<i>Contents: 1 – 6 ml A bottle, 1 – 6 ml B bottle, 1 – 6 ml Tenure S Bond Enhancer, 1 – 3 ml Tenure S Filled Enhancer, 1 – 3 ml Etch 'N' Seal, syringe tips 18 G (6 pc.), brush tips (60 pc.), clappen dish (2 pc.), brush-tip handle, All-Surface Bonding Chart, instructions</i>	
Tenure MPB A – 6 ml Refill Kit	030114510
Tenure MPB B – 6 ml Refill Kit	030114610
<i>Contents: 1 – 6 ml bottle, instructions</i>	

Product	Item #
Tenure S	
Tenure S Value Kit	031145100
<i>Contents: 3 – 6 ml bottles, instructions</i>	
Tenure S Bond Enhancer	032245101B
<i>Contents: 1 – 6 ml bottle, instructions</i>	
Tenure S Filled Bond Enhancer	031145110B
<i>Contents: 1 – 3 ml syringe, instructions</i>	
Dab-Eze Tenure S – 3 g Jar	031145201B

Available through

 HENRY SCHEIN[®]
DENTAL

To Order: 1-800-372-4346 8:00am–8:30pm (et)
www.henryscheindental.com